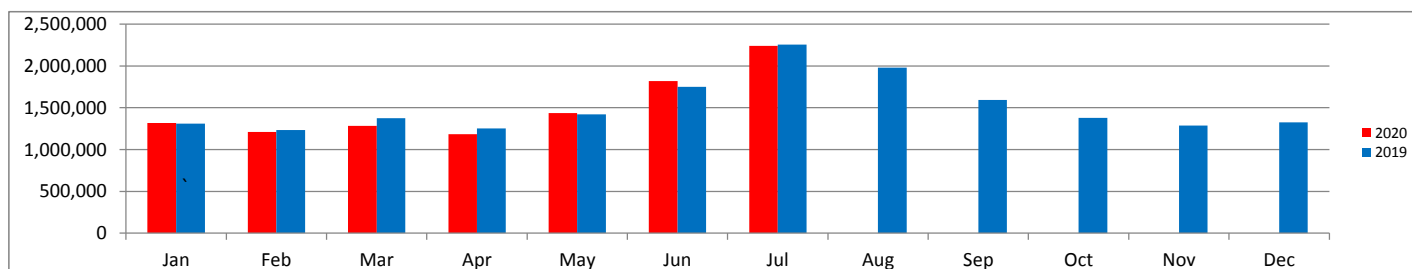


## LAWSS Flow Summary

LAWSS Flow Summary									Draft						Total	% Total
Total Flows as of Jul 2020															Year To Date for:	
LAWSS Member		Jan	Feb	Mar	Apr	May	Jun	Jul	Aug	Sep	Oct	Nov	Dec	Jan - Jul		
Sarnia	2020	776,102	727,623	774,972	747,178	919,009	1,158,038	1,392,746	0	0	0	0	0	6,495,669	62.22	
	2019	763,540	710,071	793,833	772,802	859,360	928,004	1,306,982	1,232,482	954,642	843,767	740,144	786,066	10,691,693	59.34	
Point Edward	2020	27,526	23,425	23,101	18,471	23,805	33,792	42,303	0	0	0	0	0	192,423	1.84	
	2019	27,627	25,262	28,086	27,709	32,081	38,498	50,463	53,100	36,311	31,273	40,091	26,845	417,348	2.32	
St. Clair	2020	387,392	342,521	355,870	291,512	331,343	427,767	573,794	0	0	0	0	0	2,710,199	25.96	
	2019	407,497	389,310	437,481	329,430	376,717	607,849	669,638	489,505	436,191	363,446	370,260	379,175	5,256,498	29.18	
Plympton/Wyoming	2020	61,058	58,397	57,610	64,989	88,435	114,393	132,217	0	0	0	0	0	577,098	5.53	
	2019	60,624	55,794	61,245	63,800	73,513	86,825	126,745	108,289	79,740	69,076	65,525	62,935	914,109	5.07	
Lambton Shores	2020	30,090	24,113	26,482	25,177	31,052	37,083	42,459	0	0	0	0	0	216,457	2.07	
	2019	12,193	15,213	12,491	14,747	28,233	32,872	43,978	43,586	42,789	28,509	31,238	28,078	333,927	1.85	
Watford/Warwick	2020	30,802	28,896	33,215	29,760	35,096	41,810	47,862	0	0	0	0	0	247,442	2.37	
	2019	29,976	28,550	30,013	31,163	35,804	35,885	41,573	41,590	34,374	33,837	29,148	30,712	402,627	2.23	
Others														2020	10439288	
														2019	18016202	
Alvinston	2020	6,170	5,675	6,309	5,821	7,041	7,234	7,281	0	0	0	0	0	45,531	0.43	
	2019	7,072	6,668	10,291	12,120	16,322	18,398	15,460	11,028	8,694	9,193	10,813	10,829	136,888	0.75	
Petrolia	2020	0	0	6,120	0	0	0	0	0	0	0	0	0	6,120	0.06	
	2019	0	0	0	0	0	0	0	0	0	0	0	0	0	0.00	
Chatham-Kent	2020	0	0	0	0	0	0	0	0	0	0	0	0	0	0.00	
	2019	0	1,072	0	778	129	0	0	0	0	0	0	0	1,979	0.01	
Totals	2020	1,319,140	1,210,650	1,283,680	1,182,910	1,435,780	1,820,117	2,238,662	0	0	0	0	0	10,490,939		
	2019	1,308,530	1,231,940	1,373,440	1,252,550	1,422,160	1,748,330	2,254,838	1,979,580	1,592,740	1,379,100	1,287,220	1,324,640	18,155,069		



Note:

Work Sheet Revision Date: 04-Feb-2020

**Current Year 2020**  
**Last month entered Jul**

**Year to Date**  
**Total**

<b>LAWSS Members</b>	<b>Jan</b>	<b>Feb</b>	<b>Mar</b>	<b>Apr</b>	<b>May</b>	<b>Jun</b>	<b>Jul</b>	<b>Aug</b>	<b>Sep</b>	<b>Oct</b>	<b>Nov</b>	<b>Dec</b>	<b>Jan - Jul</b>
City of Sarnial:	776,102	727,623	774,972	747,178	919,009	1,158,038	1,392,746	0	0	0	0	0	6,495,669
Point Edward:	27,526	23,425	23,101	18,471	23,805	33,792	42,303	0	0	0	0	0	192,423
St. Clair Township:	387,392	342,521	355,870	291,512	331,343	427,767	573,794	0	0	0	0	0	2,710,199
Plympton/Wyoming:	61,058	58,397	57,610	64,989	88,435	114,393	132,217	0	0	0	0	0	577,098
Lambton Shores:	30,090	24,113	26,482	25,177	31,052	37,083	42,459	0	0	0	0	0	216,457
Watford/Warwick:	30,802	28,896	33,215	29,760	35,096	41,810	47,862	0	0	0	0	0	247,442
	1,312,970	1,204,975	1,271,252	1,177,089	1,428,739	1,812,883	2,231,381	0	0	0	0	0	10,439,288
<b>Others</b>													
Town of Alvinston:	6,170	5,675	6,309	5,821	7,041	7,234	7,281	0	0	0	0	0	45,531
Town of Petrolia:	0	0	6,120	0	0	0	0	0	0	0	0	0	6,120
Chatham-Kent:	0	0	0	0	0	0	0	0	0	0	0	0	0
	1,319,140	1,210,650	1,283,680	1,182,910	1,435,780	1,820,117	2,238,662	0	0	0	0	0	
	1,319,140	1,210,650	1,283,680	1,182,910	1,435,780	1,820,117	2,238,662	0	0	0	0	0	10,490,939

**Last Years Data 2019**

<b>LAWSS Members</b>													
City of Sarnial:	763,540	710,071	793,833	772,802	859,360	928,004	1,306,982	1,232,482	954,642	843,767	740,144	786,066	10,691,693
Point Edward:	27,627	25,262	28,086	27,709	32,081	38,498	50,463	53,100	36,311	31,273	40,091	26,845	417,348
St. Clair Township:	407,497	389,310	437,481	329,430	376,717	607,849	669,638	489,505	436,191	363,446	370,260	379,175	5,256,498
Plympton/Wyoming:	60,624	55,794	61,245	63,800	73,513	86,825	126,745	108,289	79,740	69,076	65,525	62,935	914,109
Lambton Shores:	12,193	15,213	12,491	14,747	28,233	32,872	43,978	43,586	42,789	28,509	31,238	28,078	333,927
Watford/Warwick:	29,976	28,550	30,013	31,163	35,804	35,885	41,573	41,590	34,374	33,837	29,148	30,712	402,627
	1,301,458	1,224,200	1,363,150	1,239,652	1,405,708	1,729,932	2,239,379	1,968,552	1,584,046	1,369,907	1,276,407	1,313,811	18,016,202
<b>Others</b>													
Town of Alvinston:	7,072	6,668	10,291	12,120	16,322	18,398	15,460	11,028	8,694	9,193	10,813	10,829	136,888
Town of Petrolia:	0	0	0	0	0	0	0	0	0	0	0	0	0
Chatham-Kent:	0	1,072	0	778	129	0	0	0	0	0	0	0	1,979
	1,308,530	1,231,940	1,373,440	1,252,550	1,422,160	1,748,330	2,254,838	1,979,580	1,592,740	1,379,100	1,287,220	1,324,640	
	1,308,530	1,231,940	1,373,440	1,252,550	1,422,160	1,748,330	2,254,838	1,979,580	1,592,740	1,379,100	1,287,220	1,324,640	18,155,069

Work Sheet Revision Date: 04-Feb-2020

LAWSS Water used by the

## City of Sarnia

For the Month of: July 2020

Lambton Area Water Supply System

1215 Fort St. Sarnia, On N7V 1M1

Phone:(519)344-7429

Fax: (519)344-4337

Meter num	Meter Location	Read date 31-Jul-20	Last Read date 30-Jun-20	Difference	Calibration Adjustments		X	Flow
					As Found	As Left		
15	HighL High Net Flow Totalizer	2,135,956	1,929,524	206,432			1	206,432
13	HighL Low Net Flow Totalizer	201,705,490	199,673,260	2,032,230			1	2,032,230
								<b>Entering Sarnia:</b> 2,238,662
								Members Monthly % Used
<b><u>Leaving Sarnia to LAWSS Members:</u></b>								
Village of Point Edward - Grand Total:								42,303 1.9
St. Clair Township - Grand Total:								573,794 25.7
Plympton/Wyoming - Grand Total:								132,217 5.9
Lambton Shores - Grand Total:								42,459 1.9
Village of Watford/Township of Warwick - Grand Total:								47,862 2.1
<b><u>Leaving Sarnia to Others:</u></b>								
Town of Alvinston - Grand Total:								7,281
Town of Petrolia - Grand Total:								0
Chatham-Kent Area Water - Grand Total:								0
								<b><u>Metered Consumption:</u></b> 1,392,746
								<b>Adjustments:</b>
								<b>City of Sarnia - Total Consumption:</b> 1,392,746
								<b>Leakage rate adjustment</b> 0% 0
								<b><u>City of Sarnia - Grand Total:</u></b> 1,392,746 62.4
								<b>Overall Grand Total:</b> 2,238,662 100.0

Reason for Adjustment:



Mark Harris (Operations Manager)

LAWSS Water used by the

## Village of Point Edward

For the Month of: July 2020

**Lambton Area Water Supply System**  
**1215 Fort St. Sarnia, On N7V 1M1**  
 Phone:(519)344-7429  
 Fax: (519)344-4337

Meter num	Meter Location	Read date 31-Jul-20	Last Read date 30-Jun-20	Difference	Calibration Adjustments		X	Flow	%
					As Found	As Left			
CH01	Venetian Vill (Mag)	517,491	509,724	7,767			1	7,767	19.1
CH02	Ven & Exmouth (Mag)	44,265	44,196	69			1	69	0.2
CH03	Michigan & Monk (Mag)	1,201,705	1,169,121	32,584			1	32,584	80.1
CH04	Michigan & Front (Mag)	142,643	142,386	256			1	256	0.6
								<b>Metered Consumption:</b>	40,676 100.0

Reason for Adjustment:

Adjustments:

Village of Point Edward - Total Consumption:	40,676
Leakage rate adjustment 4%	1,627
<b>Village of Point Edward - Grand Total:</b>	<b>42,303</b>



Mark Harris (Operations Manager)

LAWSS Water used by the

## St. Clair Township

For the Month of: July 2020

Lambton Area Water Supply System

1215 Fort St. Sarnia, On N7V 1M1

Phone:(519)344-7429

Fax: (519)344-4337

Meter num	Meter Location	Read date 31-Jul-20	Last Read date 30-Jun-20	Difference	Calibration Adjustments		X	Flow	%
					As Found	As Left			
WL-O	WL High Net Flow - West Lambton	40,695,460	40,143,704	551,756			1	551,756	100.0
3100	Plank Road (3/4)	4,215	4,215	0			1	0	
	<b>Back to Sarnia</b>								
1100	LaSalle & Parkway	9,162	9,161	1			1	1	0.0
1090	LaSalle & Tashmoo	5,113	5,083	30			1	30	0.0

**Entering St. Clair Township:** 551,756 100.0

**Leaving St. Clair Township**

Back to Sarnia: 31 0.0

Chatham-Kent Area Water - Total Consumption: 0

**Metered Consumption:** 551,725 100.0

**Adjustments:**

Reason for Adjustment:

**St. Clair Township - Total Consumption:** 551,725

**Leakage rate adjustment 4%** 22,069

**St. Clair Township - Grand Total:** 573,794



Mark Harris (Operations Manager)

LAWSS Water used by the

## Township of Plympton / Village of Wyoming

For the Month of: July 2020

**Lambton Area Water Supply System**  
**1215 Fort St. Sarnia, On N7V 1M1**  
 Phone: (519)344-7429  
 Fax: (519)344-4337

Meter num	Meter Location	Read date 31-Jul-20	Last Read date 30-Jun-20	Difference	Calibration Adjustments		X	Flow	%	
					As Found	As Left				
Entering Plympton										
5001	Ch05 Low Net Flow - Maundaumin	57,811	57,811	0			1	0		
5002	Ch05 High Net Flow - Maundaumin	19,184,568	18,963,308	221,260			1	221,260		
Village of Wyoming										
8001	Wyoming	432,670	432,670	0			1	0		
8002	Wyoming	1,682	8,826	2,856			10	28,560		
Back to Sarnia										
1005	Brights Grove (Sarnia)	610	610	0			0.1	0		
1006	Brights Grove (Sarnia)	81,540	81,540	0			10	0		

**Entering Plympton:** 221,260

**Leaving Plympton**

Village of Wyoming: 28,560

Back to Sarnia: 0

Lambton Shores - Total Consumption: 40,826

Watford/Warwick - Total Consumption: 46,022

Town of Alvinston - Total Consumption: 7,281

Town of Petrolia - Total Consumption: 0

**Metered Consumption For Plympton:** 98,571

Village of Wyoming: 28,560

**Reason for Adjustment:**

**Adjustments:**

**Plympton/Wyoming - Total Consumption:** 127,131

Leakage rate adjustment 4% 5,085

**Plympton/Wyoming - Grand Total:** 132,217



Mark Harris (Operations Manager)

LAWSS Water used by the

## Lambton Shores

For the Month of: July 2020

Lambton Area Water Supply System

1215 Fort St. Sarnia, On N7V 1M1

Phone:(519)344-7429

Fax: (519)344-4337

Meter num	Meter Location	Read date	Last Read date	Difference	Calibration Adjustments		X	Flow	%
		31-Jul-20	30-Jun-20		As Found	As Left			
7003	Ch07 High Net Flow - Townsend	3,801,982	3,763,058	38,924			1	38,924	
7004	Ch07 Low Net Flow - Townsend	257,591	255,688	1,902			1	1,902	
								<b>Metered Consumption:</b>	40,826

Reason for Adjustment:

Adjustments:



Mark Harris (Operations Manager)

Lambton Shores - Total Consumption:	40,826
Leakage rate adjustment 4%	1,633
<b>Lambton Shores - Grand Total:</b>	<b>42,459</b>

LAWSS Water used by the

## Village of Watford/Township of Warwick

For the Month of: July 2020

**Lambton Area Water Supply System**  
**1215 Fort St. Sarnia, On N7V 1M1**  
 Phone: (519)344-7429  
 Fax: (519)344-4337

Meter num	Meter Location	Read date 31-Jul-20	Last Read date 30-Jun-20	Difference	Calibration Adjustments		X	Flow	%
					As Found	As Left			
<b>Entering Watford/Warwick</b>									
9001	Ch10 High Net Flow - London Line	7,017,018	6,955,701	61,317			1	61,317	
9002	Ch10 Low Net Flow - London Line	660,232	655,187	5,046			1	5,046	
9003	Ch11 High Net Flow - Confederation	1,178,817	1,174,091	4,726			1	4,726	
9004	Ch11 Low Net Flow - Confederation	62,618	59,493	3,126			1	3,126	
<b>Leaving Watford/Warwick</b>									
5013	Ch09 High Net Flow - Egremont	2,845,322	2,824,410	20,912			1	20,912	
AF	Alvin High Net Flow Totalizer	1,581,148	1,573,867	7,281			1	7,281	

<b><u>Entering Watford/Warwick:</u></b>	74,214
<b><u>Leaving Watford/Warwick:</u></b>	28,192
<b><u>Metered Consumption:</u></b>	46,022
<b>Adjustments:</b>	

**Reason for Adjustment:**

<b>Watford/Warwick - Total Consumption:</b>	46,022
<b>Leakage rate adjustment 4%</b>	1,841
<b><u>Village of Watford/Township of Warwick - Grand Total:</u></b>	<u>47,862</u>



.....  
**Mark Harris (Operations Manager)**



LAWSS Water used by the

## Town of Alvinston

For the Month of: July 2020

Lambton Area Water Supply System

1215 Fort St. Sarnia, On N7V 1M1

Phone:(519)344-7429

Fax: (519)344-4337

Meter num	Meter Location	Read date	Last Read date	Difference	Calibration Adjustments		X	Flow	%
		31-Jul-20	30-Jun-20		As Found	As Left			
AF	Alvin High Net Flow Totalizer	1,581,148	1,573,867	7,281			1	7,281	
								<u>Metered Consumption:</u>	7,281
Reason for Adjustment:								<u>Adjustments:</u>	

Town of Alvinston - Total Consumption: 7,281  
Leakage rate adjustment 0% 0  
Town of Alvinston - Grand Total: 7,281



Mark Harris (Operations Manager)

LAWSS Water used by the

## Town of Petrolia

For the Month of: July 2020

Lambton Area Water Supply System

1215 Fort St. Sarnia, On N7V 1M1

Phone:(519)344-7429

Fax: (519)344-4337

Meter num	Meter Location	Read date	Last Read date	Difference	Calibration Adjustments		X	Flow	%
		31-Jul-20	30-Jun-20		As Found	As Left			
PF	Petrolia Flows	139,669	139,669	0			1	0	

Metered Consumption: 0

Reason for Adjustment:

Adjustments:

Town of Petrolia - Total Consumption: 0

Leakage rate adjustment 0% 0

Town of Petrolia - Grand Total: 0



Mark Harris (Operations Manager)

LAWSS Water used by the

## Chatham-Kent Area Water

For the Month of: July 2020

Lambton Area Water Supply System

1215 Fort St. Sarnia, On N7V 1M1

Phone:(519)344-7429

Fax: (519)344-4337

Meter num	Meter Location	Read date	Last Read date	Difference	Calibration Adjustments		X	Flow	%
		31-Jul-20	30-Jun-20		As Found	As Left			
CKF	Chatham-Kent Flows	907	907	0			1	0	

**Metered Consumption:** 0

**Reason for Adjustment:**

**Adjustments:**

**Chatham-Kent Area Water - Total Consumption:** 0

**Leakage rate adjustment 0%** 0

**Chatham-Kent Area Water - Grand Total:** 0



.....  
**Mark Harris (Operations Manager)**